



DIVA Quick Start Guide

Version 2.0.1

DIVA

Contents

1	End User License Agreement	2
2	Introduction	3
3	Configure Diva	4
3.1	Login	4
3.2	Add a camera to a server	5
3.3	Layout	8
3.4	Usermanagement	10
3.4.1	Creating Usergroups	10
3.4.2	Creating users	11
3.4.3	Creating a Devicegroup	13
3.4.4	Setup user rights	14

Chapter 1

End User License Agreement

User license for the Digital Intelligent Video Architecture DIVA® software.

READ THIS CAREFULLY!

This End User License Agreement (EULA) is a legal contract between you (natural person or legal person) and the supplier (producer) of DIVA® hardware, firmware and software ("Software Product or Software"), the above product of which you have received. The Software product consists of computer software, the accompanying media, printed documentation and any on-line or electronic documentation. The act of using the DIVA® software means that you agree with the regulations of this contract. If you do not agree with the regulations of this contract, the supplier/producer is not prepared to give you the user right to use the Software product. You're not allowed to use the software product in this case.

SOFTWARE PRODUCT LICENSE The Software product in the DIVA® is protected by copyrights and international copyright treaties, and by other intellectual ownership laws and treaties. The software product is given in license and not sold.

GRANT OF THE RIGHT OF USE. This contract grants you the following rights /obligations:

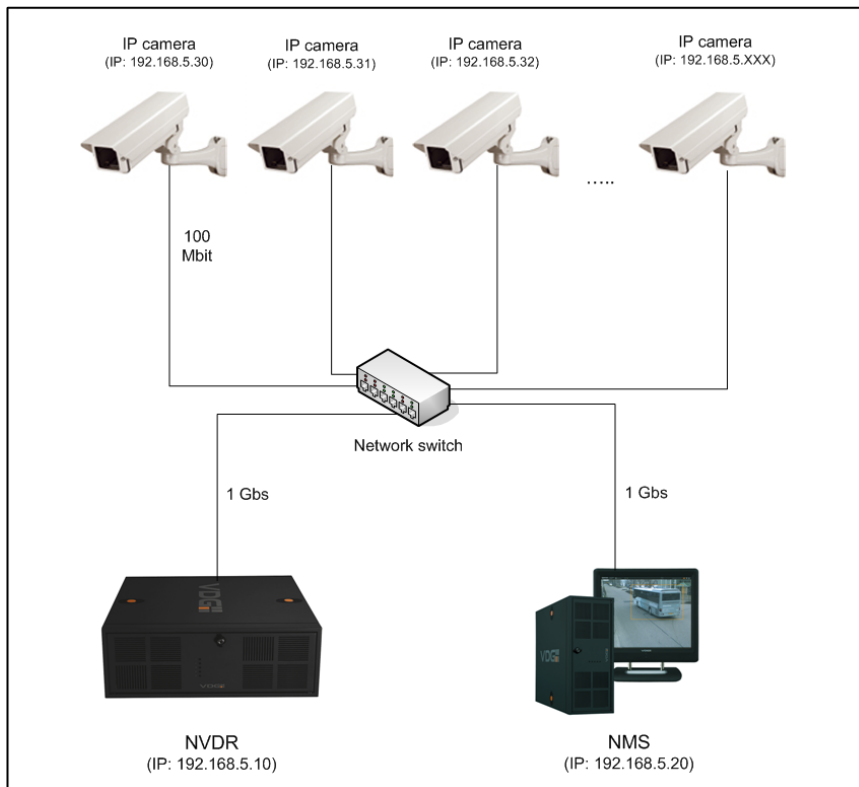
- Use of the software in the DIVA®
- No reverse-engineering, decompilation or dismantling
- It is not permitted to add or remove software
- It is not permitted to add or remove hardware
- It is not permitted to change any settings in the operating system with the exception of installation, de-installation or settings of printing equipment.

Chapter 2

Introduction

This manual explains how to configure DIVA in a relatively short time to a fully working system according to the schematic below. It is a basic server - client configuration, but same applies to a standalone system. The following should already been done:

- Cameras are connected to the network and are configured with an IP-address.
- DIVA systems are connected to the network and are configured with an IP-address.
- DIVA software is installed on all systems, use installation guide to help install DIVA.
- Activated DIVA license



DIVA installation example

Chapter 3

Configure Diva

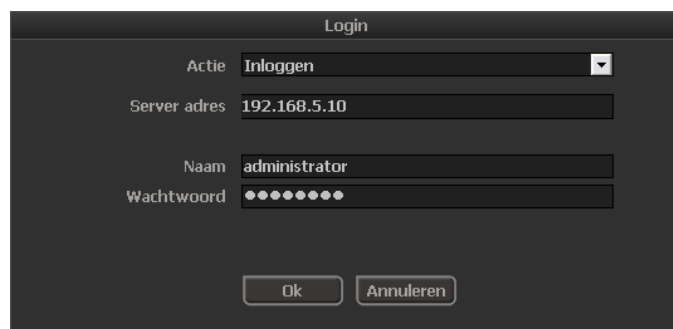
This chapter describes how a basic configuration can be done on Diva and assumes that all systems are active and the Diva Software is running. It describes the following subjects:

- Login on a Diva system.
- Add cameras to a Diva
- Create a layout to view (live-)video.
- Create a user with restricted privileges, for example a receptionist who is only allowed to view some live video.

3.1 Login

To gain access to a Diva system you have to login. In this example the NMS is used to change the server setup. This means that the NMS must login on the NVDR. All settings are stored on the server, because this is the system on which you logged in.

When Diva is running initially a gray and empty screen is visible with at the top a menubar. This menubar shows from left to right the Diva logo, the current time, software version number, and a lock shaped icon. Currently nobody is logged in. Click on the lock icon to open the login dialog.



Inlog dialog

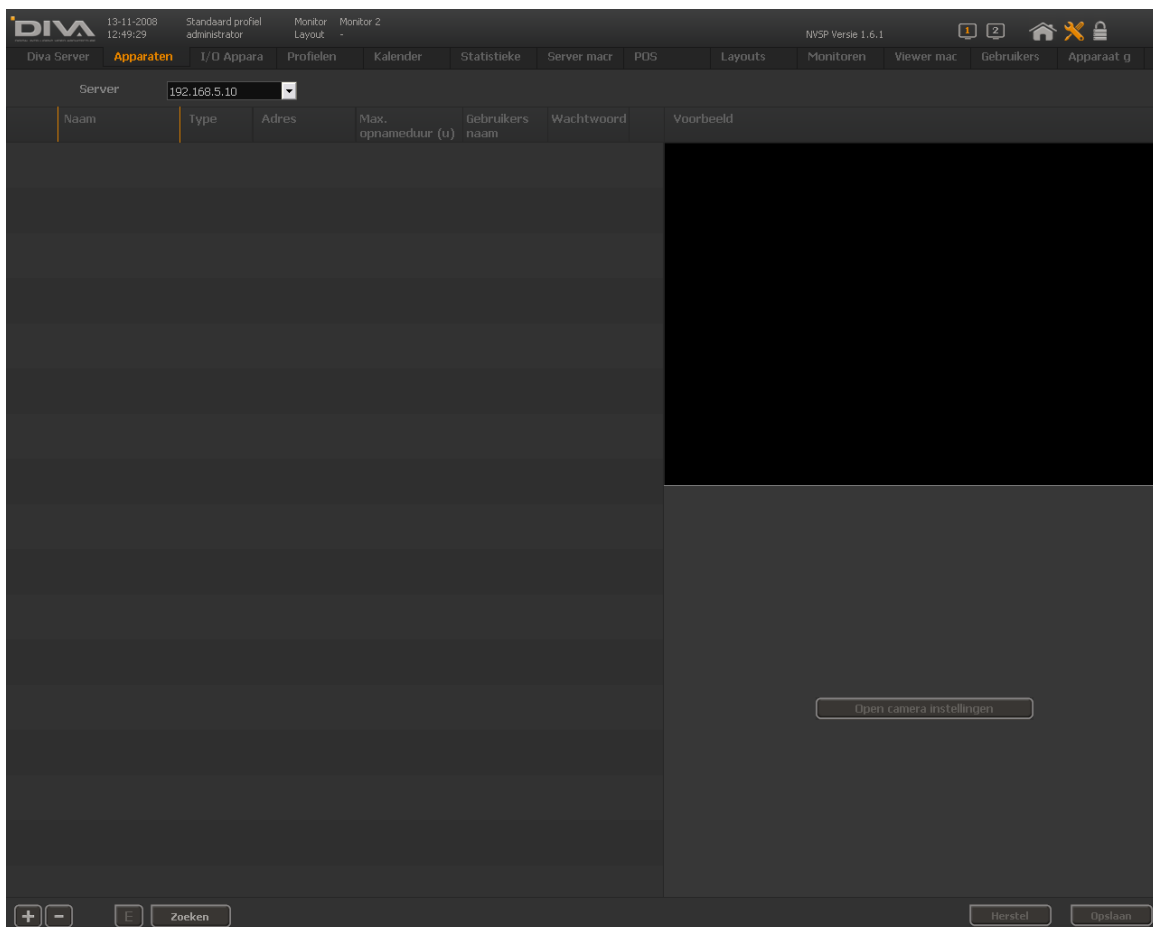
Use the credentials from below in the dialog and click 'Ok' to login. Note: if you have to login locally on a NVSP or NVDR then the server address should be '127.0.0.1'. All settings are then stored locally.

Server adres: 192.168.5.10
Naam: Administrator
Wachtwoord: !DVadmin

After login a few icons are added to the menubar: an icon in the shape of a home and an icon in the shape of a tool set. The home icon goes to the main screen and the toolset icon goes to the setup of the Diva. The following paragraphs describe how to do the basic configuration.

3.2 Add a camera to a server

Click on the toolset icon to go to the Diva setup. The complete setup is divided in tabs. In the tab 'Devices' cameras can be added to the server. See the screenshot below for the 'Devices' tab.

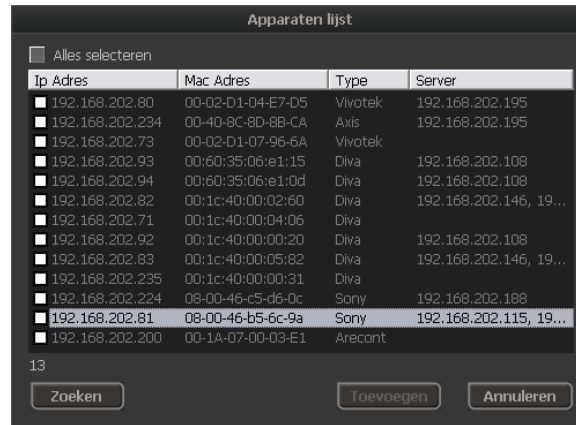


Devices tab

Currently the Device list is empty. There are two ways to add cameras, manually or with the search functionality. This manual only describes the search functionality. See the complete Diva manual how to add cameras

manually.

Click on the 'Search' button to open the dialog. It shows a list of all found cameras in the local network. For each found camera the IP-address, physical MAC-address, camera brand, on which server the is already added. If the camera is not yet added to another server the last column is empty.



The screenshot shows a dialog box titled "Apparaten lijst" (Devices list). It contains a table with the following columns: "Ip Adres", "Mac Adres", "Type", and "Server". The table lists 13 cameras. The first two columns have checkboxes next to the IP addresses. The "Server" column contains either a server IP address or is empty. At the bottom of the dialog, there are three buttons: "Zoeken" (Search), "Toevoegen" (Add), and "Annuleren" (Cancel).

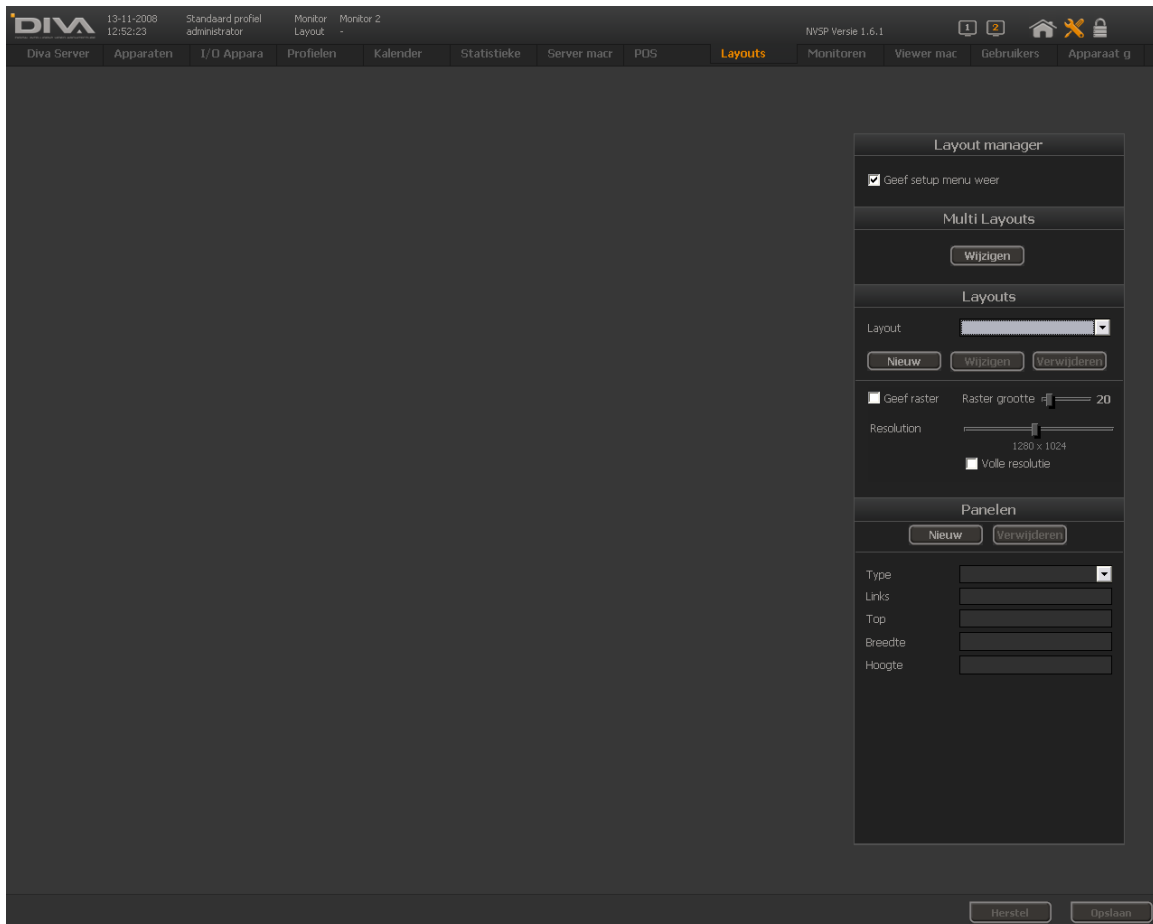
Ip Adres	Mac Adres	Type	Server
<input type="checkbox"/> 192.168.202.80	00-02-D1-04-E7-D5	Vivotek	192.168.202.195
<input type="checkbox"/> 192.168.202.234	00-40-8C-8D-8B-CA	Axis	192.168.202.195
<input type="checkbox"/> 192.168.202.73	00-02-D1-07-96-6A	Vivotek	
<input type="checkbox"/> 192.168.202.93	00:60:35:06:e1:15	Divia	192.168.202.108
<input type="checkbox"/> 192.168.202.94	00:60:35:06:e1:0d	Divia	192.168.202.108
<input type="checkbox"/> 192.168.202.82	00:1c:40:00:02:60	Divia	192.168.202.146, 19...
<input type="checkbox"/> 192.168.202.71	00:1c:40:00:04:06	Divia	
<input type="checkbox"/> 192.168.202.92	00:1c:40:00:00:20	Divia	192.168.202.108
<input type="checkbox"/> 192.168.202.83	00:1c:40:00:05:82	Divia	192.168.202.146, 19...
<input type="checkbox"/> 192.168.202.235	00:1c:40:00:00:31	Divia	
<input type="checkbox"/> 192.168.202.224	08-00-46-c5-d6-0c	Sony	192.168.202.188
<input checked="" type="checkbox"/> 192.168.202.81	08-00-46-b5-6c-9a	Sony	192.168.202.115, 19...
<input type="checkbox"/> 192.168.202.200	00-1A-07-00-03-E1	Arecont	

List of found cameras

To add a camera check the checkbox. Multiple cameras can be checked. Click 'Add' to close the dialog and add the cameras to the devicelist. If a camera is selected in the Devicelist the live video is shown on the preview panel.

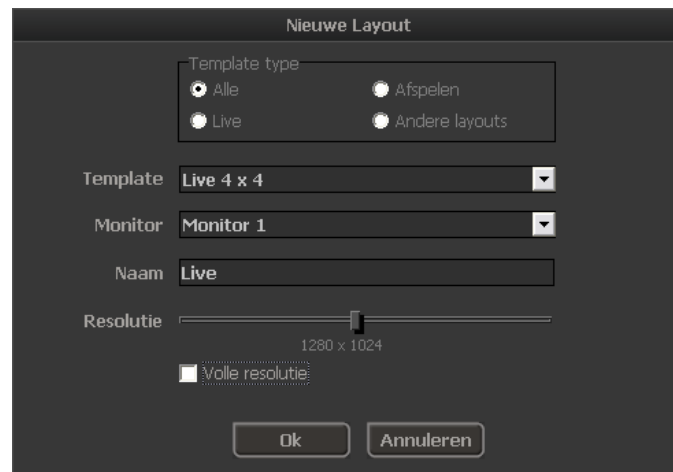
3.3 Layout

To display video you have to create a layout. Predefined layouts are available, but you can also create your own. In this example we use a standard 4x4 layout, which can show 16 cameras. Go to the tab 'Layouts'. You see an empty work sheet and a 'Layout manager'. The 'Layout manager' is used to create new layouts and to assign cameras to video panels. See screenshot below.



Layouts tab

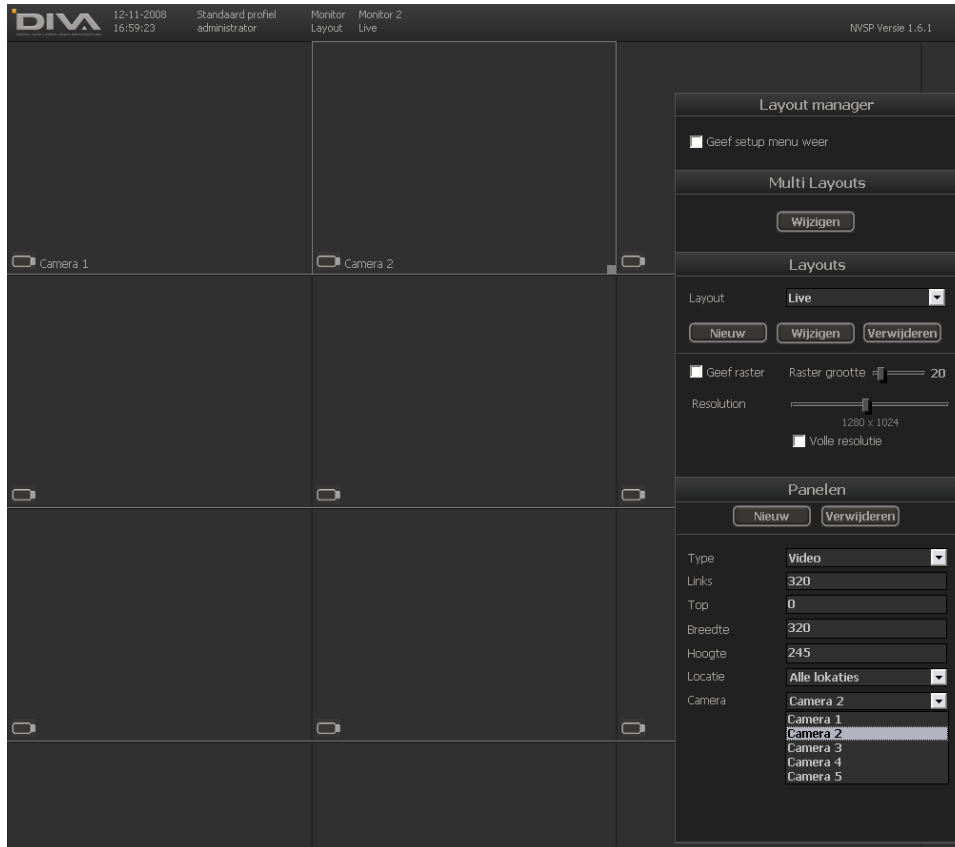
The Diva has predefined layouts for a lot of common situations, including a 4x4 layout. To create a default 4x4 layout click on the 'New' button below the 'Layouts' header in the 'Layout manager'. In the dialog some settings can be done to setup the new layout. In the combobox 'Template' there are the predefined layouts. Choose 'Live 4x4' from the list. The name and resolution of the layout can also be set. Give this layout the name 'Live'. The resolution of the layout should correspond with the resolution of the monitor on which the layout is shown. See screenshot of the dialog on the next page.



Dialog to create a layout

Click 'Ok' to close the dialog and to create the layout. It shows you the layout with 16 panels. The camera icon in the lower left corner of all panels tells you these are live video panels. There are also other type of panels like playback and eventlist panels. See the Diva manual for more information.

The video panels have no camera assigned yet. Select a panel with the mouse. Choose a camera you want to display on the panel from the combobox 'Cameras' in the 'Layout manager' under the header 'Panels'. The name of the selected camera is displayed in the lower left corner next to the camera icon.



Assign camera to a video panel

3.4 Usermanagement

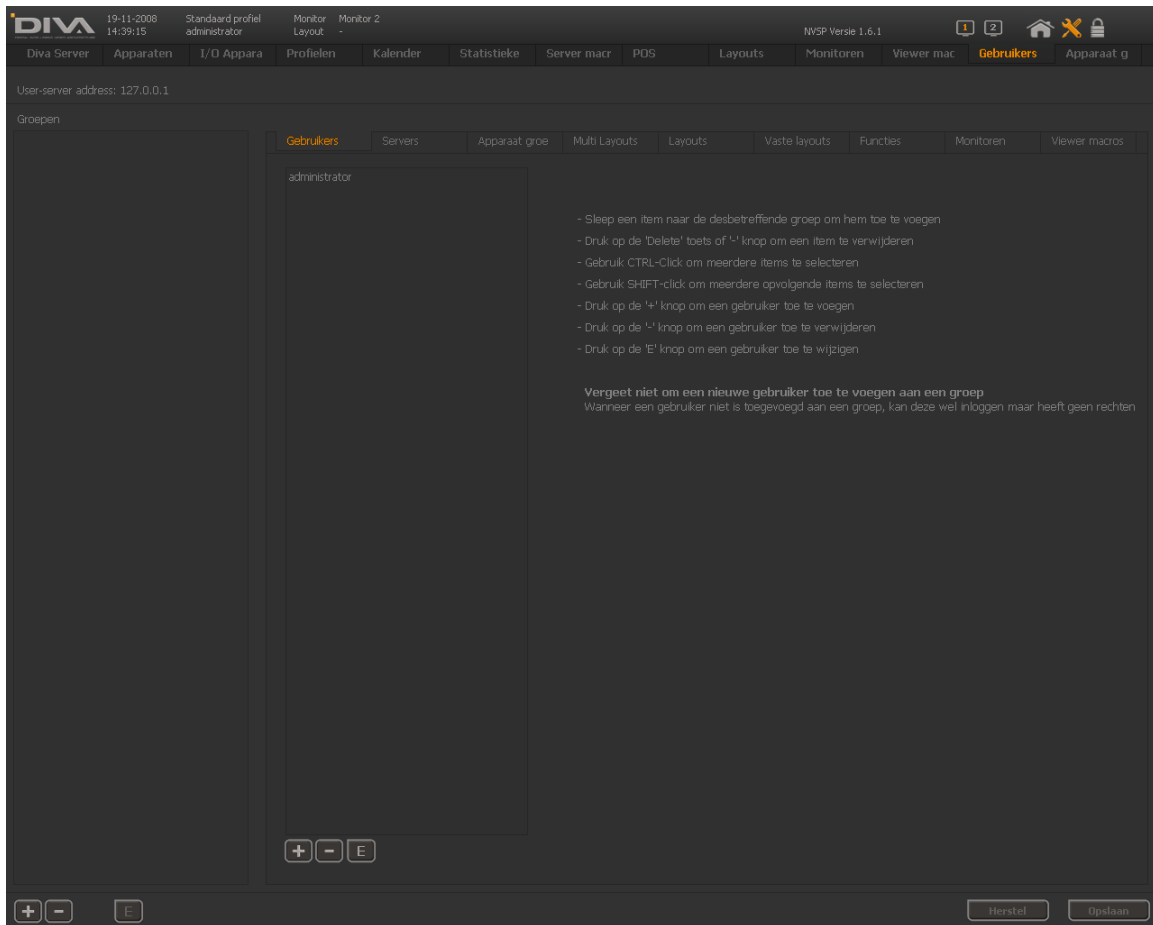
The basis of user management in the Diva are usergroups. To each usergroup you can assign users and their rights. The rights of a group are divided in : users, servers, devices, multi-layouts, layouts, fixed layouts, functions, monitoren and viewer macros. This chapter describes how to create a user 'Reception' with the following rights:

- Video from all cameras
- One layout to display video
- The user has no access to the setup, and may not change any setting

The following paragraphs describe which steps to take to setup the user 'Reception'. See the Diva manual for a more elaborate explanation about user management.

3.4.1 Creating Usergroups

Go to the tab 'Users & Groups' to create a usergroup. See screenshot below. On the left side of the screen is the list of all usergroups and the right are the different user rights which can be assigned to each group. To create a usergroup click on the '+'-button below the left most list. Give the group a meaningful name in the dialog, something like 'Restricted rights'. Click 'Ok' to close the dialog and to add the group to the usergroup list.



Users tab

3.4.2 Creating users

The tab 'Users & Groups' is divided in a few subtabs where all options for usergroups can choose. Go to the subtab 'Users' which contains the user list. To create a user click on the '+'-button below the user list. See screenshot below for opening the dialog.

The screenshot shows the 'Gebruiker toevoegen' dialog box. It has the following fields and options:

- Volledige naam:** Medewerk(st)er Receptie
- Gebruikersnaam:** Receptie
- Wachtwoord:** (masked with dots)
- Controleer wachtwoord:** (masked with dots)
- Taal:** Nederlands (dropdown menu)

At the bottom, there are two buttons: 'Ok' and 'Annuleren'.

Creating a user

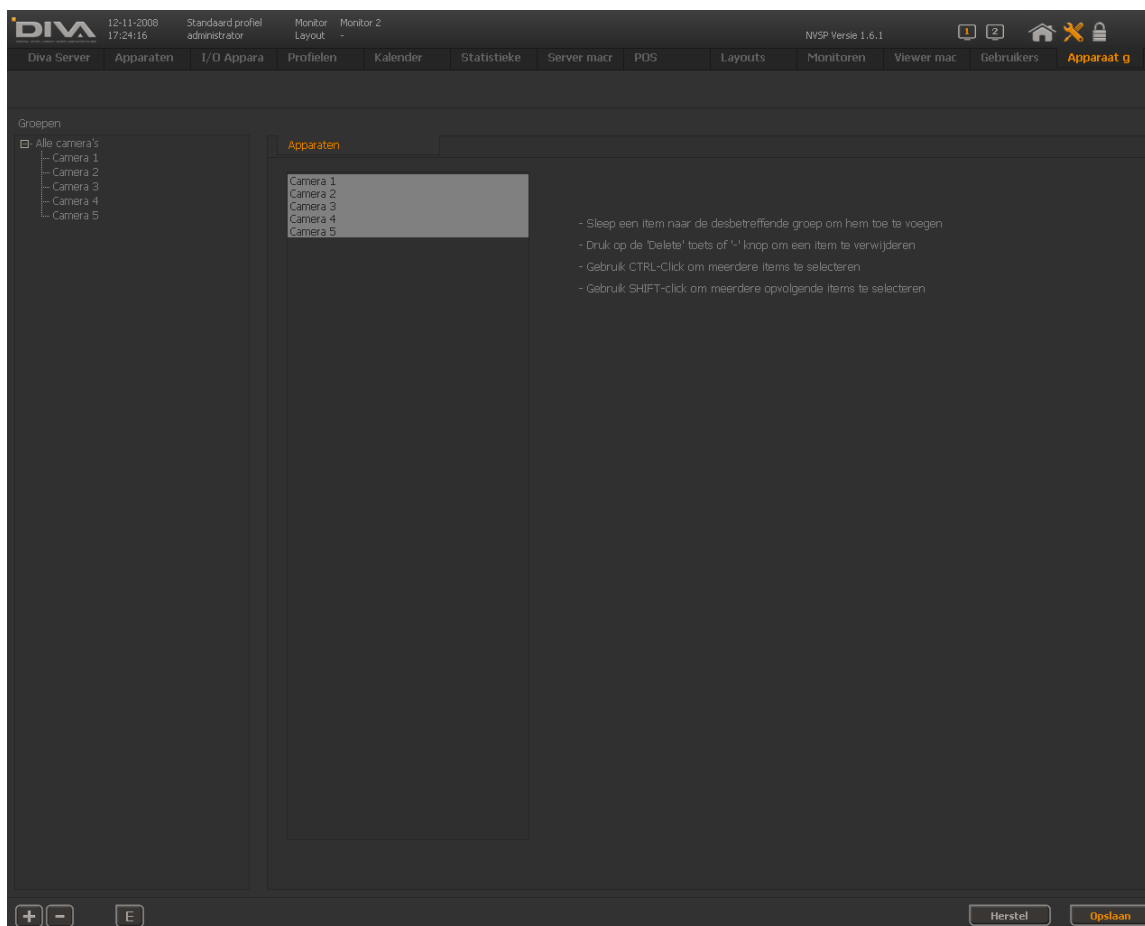
Use the information below to fill in the dialog:

Full name: Reception employee
Username: Reception
Password: 1234

Click 'Ok' to close the dialog and to add the user to the user list.

3.4.3 Creating a Devicegroup

Go to the tab 'Device groups' to add a device group. See screenshot below. To create a device group click on the '+' button below the devicegroup list. Give the devicegroup a meaningful name, like 'All cameras'. Click 'Ok' to close the dialog and to add the devicegroup to the devicegroup list.



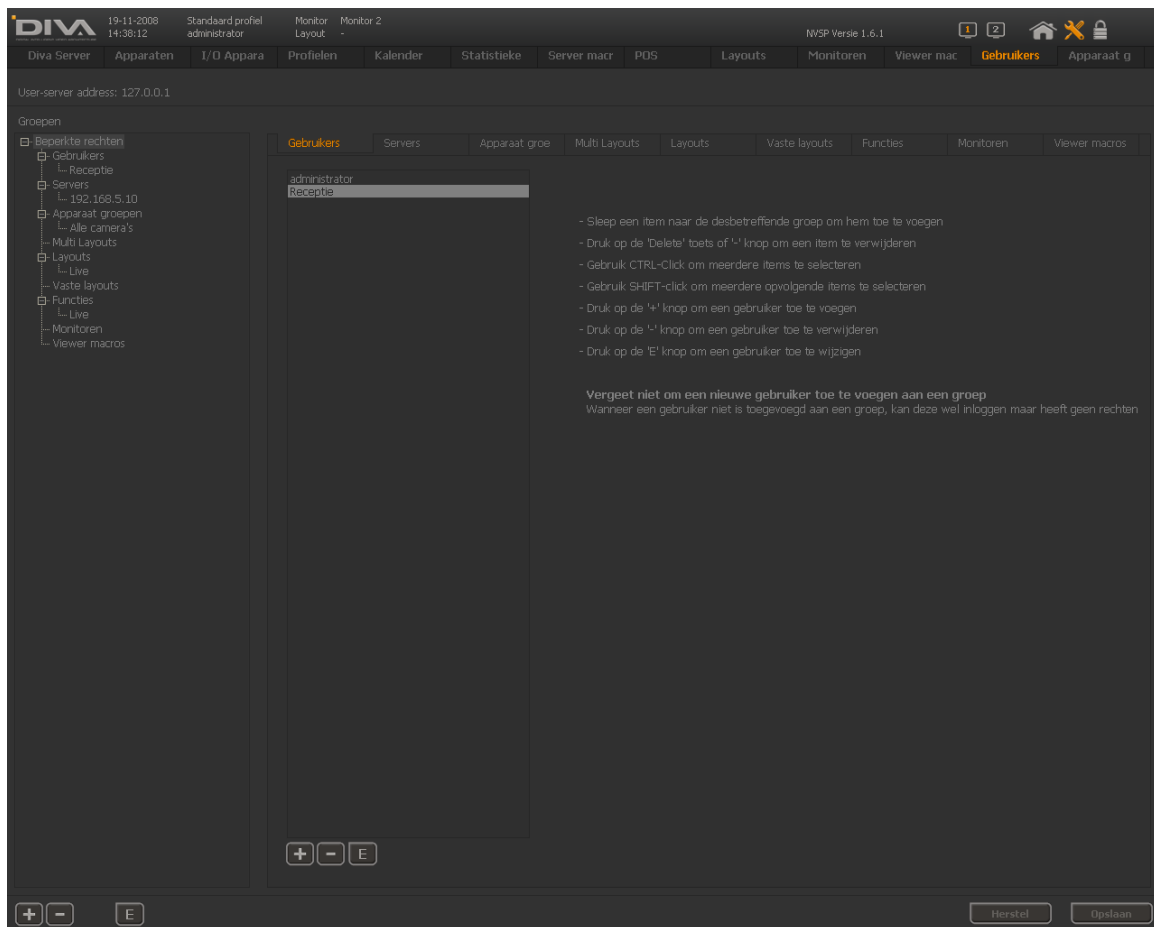
Tab Devicegroups

On the right there is a list with devices. From this list you can add devices to (multiple) groups. To add a device drag with mouse a device to a group. Add all cameras to the group 'All cameras'.

3.4.4 Setup user rights

Go back to the tab 'Users & Groups' to assign user rights to usergroup 'Restricted rights'. Choose from the sub-tabs the following items and drag these to the usergroup. Items are automatically sorted:

- Users:** Add the user 'Reception'
- Servers:** Add the server with address '192.168.5.10'
- Device groups:** Add devicegroup 'All cameras'
- Layouts:** Add the layout 'Live'
- Functions:** Add the function 'Live'



Tab Users & Groups, setup

The screenshot above shows how the usergroup should look like after assigning all privileges.