



Diva Shell User Manual

Contents

1	Introduction	2
1.1	Digital Intelligent Video Architecture (DIVA) Shell	2
2	Toolbar	3
2.1	Start system check sequence	3
2.2	Operating or setup mode	3
3	Main	4
3.1	Statistics	4
3.1.1	Hardlock information	5
3.1.2	System Status	5
3.1.3	Network Information	6
3.1.4	Hardware Configuration	6
3.1.5	Messages	6
4	ServiceMenu	7
4.1	Settings	8
4.1.1	System check settings	8
4.1.2	Language	9
4.1.3	Options	9
4.1.4	Time synchronization	9
4.2	Tasks	10
4.2.1	Windows tasks	10
4.2.2	Update	10
4.2.3	Close	11
4.2.4	Flash (Embedded only)	11
4.3	Logs	11
4.3.1	Log window	12

Chapter 1

Introduction

1.1 Digital Intelligent Video Architecture (DIVA) Shell

Main purpose of Diva Shell is to ensure the system is properly configured before starting the Diva. This is done by checking certain system critical elements like reading hardlock information, which is used for licensing, and disk volume status to ensure recording capabilities.

If one of these tests should fail, the Diva will not start. The shell can then be used to locate and solve the problem.

This manual describes the DIVA Shell software.

Chapter 2

Toolbar

The DIVA Shell toolbar is the starting point for using the DIVA Shell software.



From left to right, the toolbar shows the following information:

- *Current time*
- *Status*
 - *Next check in*
If the shell is configured to continuously check system status, the timer will countdown to zero after which the next check run will start.
 - *Closing in*
If the shell is configured to close after a successful checkrun, the timer will countdown to zero after which the shell will be closed.
 - *Lock in*
If the user in the service menu, a timer will start which also checks if the system is attended or not. If the system notices that it is unattended, it will lock the shell.
- *Software type and version*

It also presents two or three buttons that are explained in the following sections.

2.1 Start system check sequence

The rightmost button is used for starting the system check sequence and lock the program

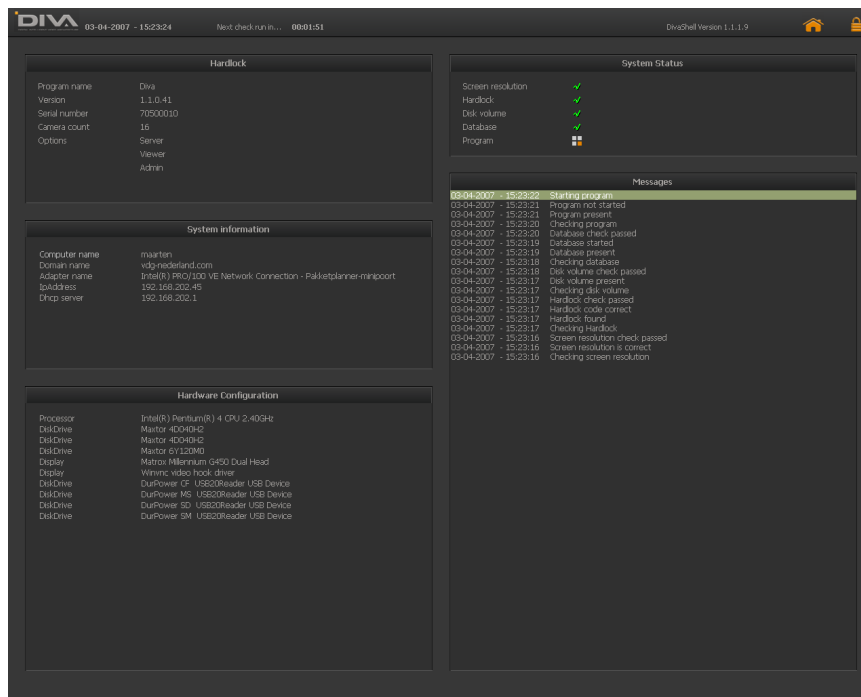
2.2 Operating or setup mode

The other two buttons on the right side of the toolbar give the user the option to switch between live and service menu mode.

Chapter 3

Main

3.1 Statistics



Information about the system is displayed here.

- *Hardlock information*
- *System check status*
- *System information*
- *Hardware configuration*
- *Status messages*

3.1.1 Hardlock information

This panel shows the hardlock information.





- *Program name*
Program for which the hardlock is meant.
- *Serial number*
System serial number
- *CameraCount*
Maximum number of cameras supported
- *Options*
Options supported

3.1.2 System Status

This panel displays the system status determined by the following checks:

- *Screen resolution*
Compares current screen resolution with set resolution. If the resolution is correct, check will pass. If the resolution is incorrect, resolution will be changed to correct value.
- *Hardlock*
Checks to see if hardlock is present. If present the code will be checked also. If both are correct, check will pass, otherwise it will fail.
- *Disk volume*
Tests the integrity of the disk volume. If the volume is not present or fails to pass the integrity test, the check will fail.
- *Database*
Checks to see if the database is present, and if present start the service. If the database service is not present or fails to start, the check will fail.
- *Program*
Checks to see if the Diva platform is present. If so, it will be started. If the program is not present or fails to start, the check will fail.

Each check has a status which is displayed by an icon. The meaning of these icons are:

-  *Checking*
Displayed by a wait cursor in the shape of the VDG logo.
-  *Check passed*
Displayed by a green 'V'
-  *Check failed*
Displayed by a red 'X'
-  *Check skipped*
Displayed by a gray '-'

3.1.3 Network Information

Information regarding the network adapters are shown in this panel

- *Computer name*
- *Domain name*
- *Ip address*
- *DHCP server address*

3.1.4 Hardware Configuration

Information regarding the hardware configuration are shown in this panel.

- *Disk Drive*
- *Display Adapter*
- *Processor information*

3.1.5 Messages

Status messages generated by the program are put in this panel.

Chapter 4

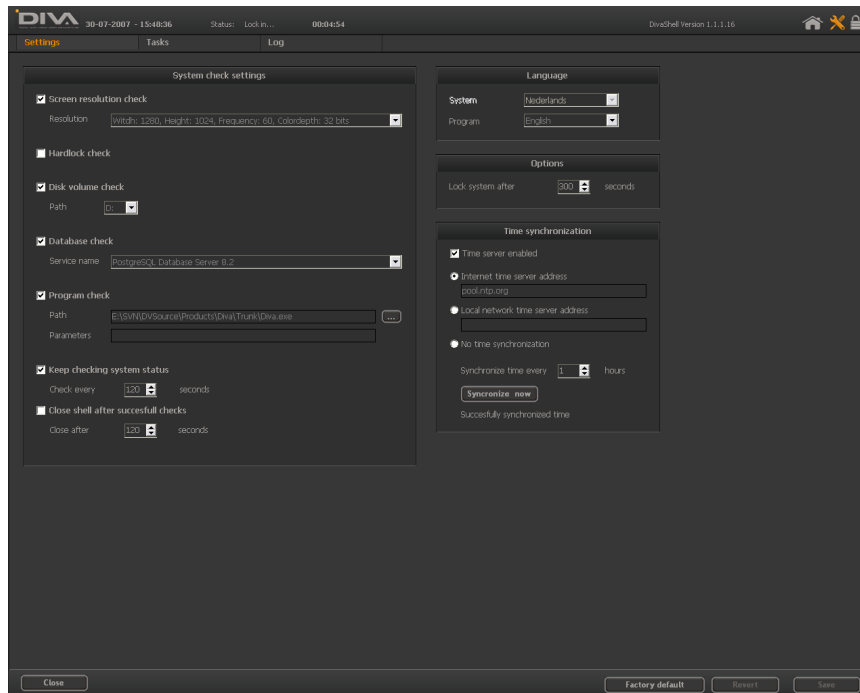
ServiceMenu

The purpose of the service menu is to modify program settings and make commonly used windows tasks available for easy access. The service menu is split into three tabs:

- *Settings*
Modify settings of the program.
- *Tasks*
Access to windows tasks and to update the system.
- *Logs*
Easy access to multiple logs.

The following paragraphs will explain the functions of these tabs.

4.1 Settings



Diva Shell settings can be modified in this panel. System and program language can also be set here.

4.1.1 System check settings

In this panel all settings regarding the system checks can be set. The following settings apply:

- *Screen resolution check*
Activate or deactivate check. Screenresolution to check for, can be chosen here
- *Hardlock check*
Activate or deactivate check
- *Database check*
Activate or deactivate check. Service name to check for can be chosen here
- *Disk volume check*
Activate or deactivate check. Path to check for can be entered here.
- *Program check*
Activate or deactivate check. The path were the program is located can be entered here together with optional program parameters.
- *Recheck after succesfull checks*
Time to wait after a check before beginning a new check run.
- *Close shell after succesfull checks*
Time to close DivaShell after a succesfull run.

4.1.2 Language

The system (windows) and program language can be chosen here. The system language can only be modified on embedded systems.

- *System (Embedded only)*
Choose system language. Can be English, Dutch, French, German or Russian.
Note: System needs to reboot in order to set the new language.
- *Program*
Choose program language. Languages can be:
 - *English*
 - *Dutch*
 - *French*

4.1.3 Options

- *Lock system*
Lock system after a time of inactivity, i.e no keyboard strokes or mouse movements.

4.1.4 Time synchronization

Time synchronization as implemented in the DivaShell can be used in two ways. It can be used to synchronize time between different diva servers or to synchronize local time to an internet time server. Combinations between these modes are also possible:

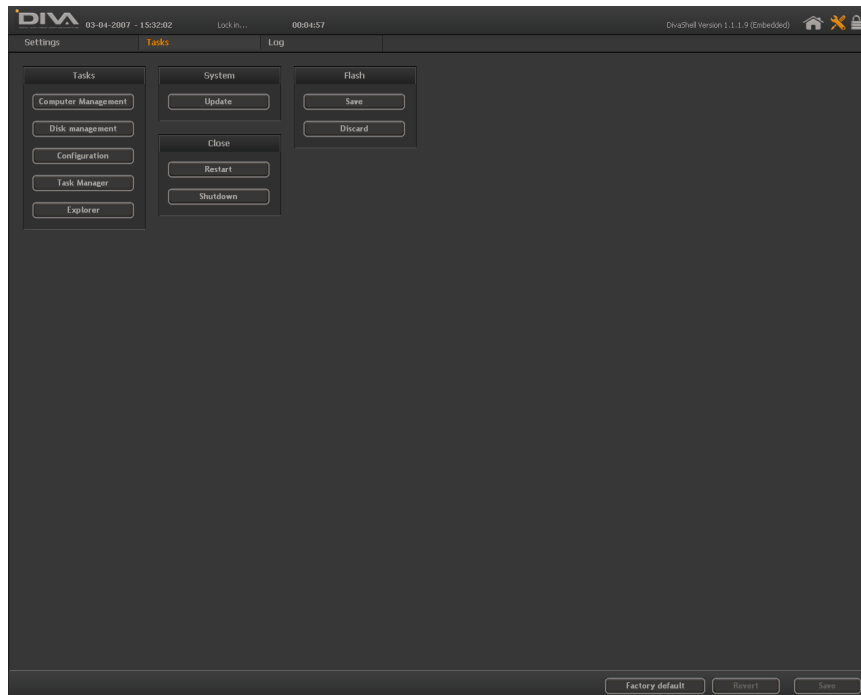
- *Synchronize local time to an internet time server*
Check the radiobutton 'Internet time server address' and fill in a server address in the edit box.
- *Synchronize local time to another DivaShell on the network*
Check the radiobutton 'Local network time server address' and fill in a ip address or computer name in the edit box.
- *Synchronize local time to an internet time server and let other DivaShell's in the network synchronize with one DivaShell*
Set the 'Local network time server address' on the other systems to the DivaShell which is configured as time server.

To disable the local timeserver uncheck 'Time server enabled'. This way other DivaShell's in the network cannot synchronize with this DivaShell. It is however still possible to synchronize local time with other time servers.

How often the time should be synchronized can be configured by setting 'synchronize time every' value (in hours). For instance, by setting it to 12 hours DivaShell will try to synchronize time every 12 hours.

To instantly synchronize time press the button 'Synchronize now'

4.2 Tasks



Commonly used windows tasks are made available for easy access. For instance configuring disks and updating the system can be done easily in the menu.

4.2.1 Windows tasks

In this panel commonly used windows management tools are made available for easy access.

- *Computer Management*
Opens the windows computer management window.
- *Disk Management*
Opens the windows disk manager.
- *Configuration*
Opens the configuration screen.
- *Task Manager*
Opens task manager
- *Explorer*
Opens windows explorer

4.2.2 Update

Tasks in relation to updating the system are described here.

- **Update**
Opens a dialog in which an update file can be chosen.
Pressing *Ok* will start the update process.
Pressing *Cancel* will close the dialog and cancels the update.
On embedded systems a restart is needed to complete the update process.

4.2.3 Close

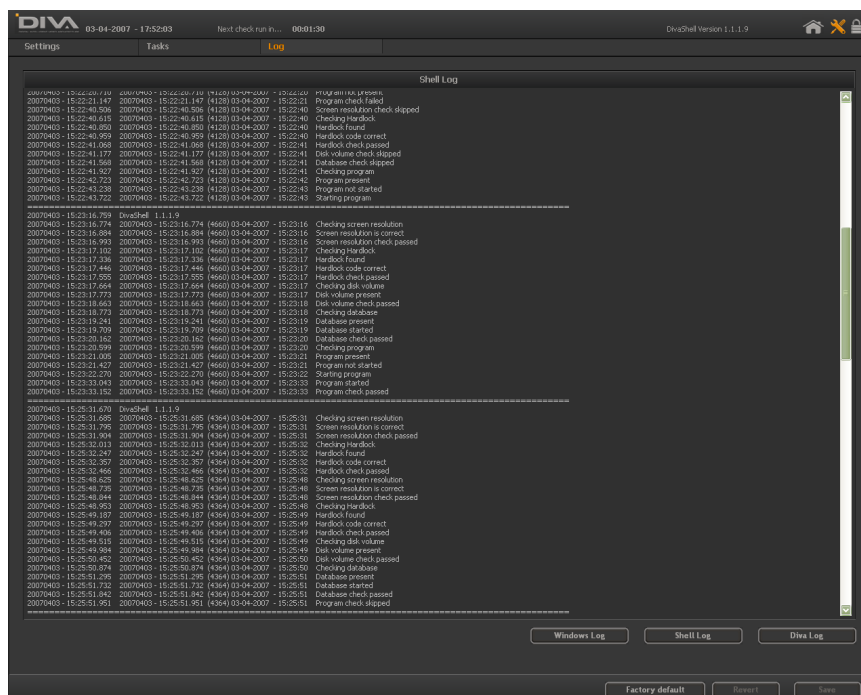
- **Restart**
Restart system after confirmation.
- **Shutdown**
Shutdown system after confirmation

4.2.4 Flash (Embedded only)

The operating system and Diva Platform reside on a flash disk which is protected by a write filter. This filter ensures that all changes made to the flash disk (this includes windows) can be undone. To save or discard changes made to this flash disk, a system reboot is needed.

- **Save**
Save changes made in windows to flash. System will be rebooted after confirmation.
- **Discard**
Discard all changes made to windows. System will be rebooted after confirmation.

4.3 Logs



Easy access to log files.

4.3.1 Log window

- *Windows log*
Opens the windows log
- *Shell log*
Opens the shell log
- *Diva log*
Opens the diva log